

Lugus HOMES



Buckhold Road, London

Asking price £599,999



Located on the fourteenth floor of the sought-after Bronze development, this beautifully presented one-bedroom apartment offers approximately 656 sq. ft. of stylish living space with uninterrupted, tree-lined views over King George's Park.

The property features floor-to-ceiling windows throughout, flooding the interiors with natural light. The dual-aspect bedroom enjoys south and west-facing views and includes a built-in wardrobe, complemented by a modern family bathroom. There is also the added convenience of a separate guest WC.

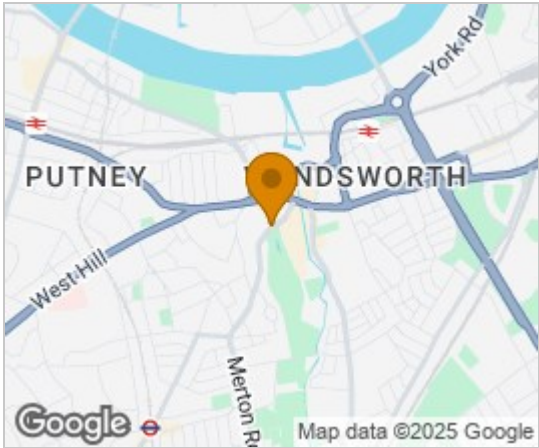
The fully fitted kitchen, with Siemens integrated appliances, flows seamlessly into the spacious open-plan reception and dining area, an ideal setting for relaxing or entertaining family and friends. Extending the full width of the living space, there is a covered balcony which provides the perfect spot to enjoy the impressive park views.

Residents of Bronze further benefit from a seven-day concierge service, a communal roof garden and secure bicycle storage.

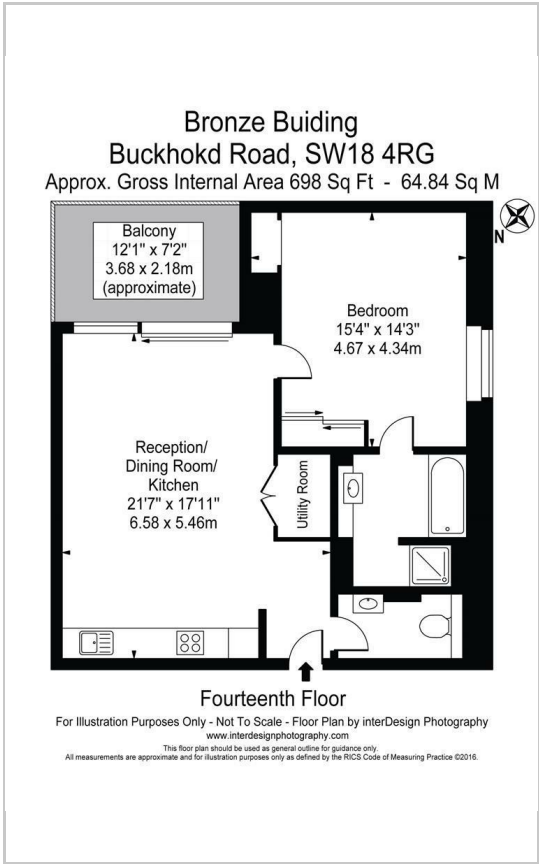
Bronze is conveniently located just 0.7 miles from Wandsworth Town Station (National Rail) and 1 mile from Southfields Underground Station (District Line), both providing excellent links into Central London and the West End. The Southside Shopping Centre, with its wide range of shops, restaurants, and leisure facilities, is only moments away, while the cafés and restaurants of Old York Road offer a more village-like charm.



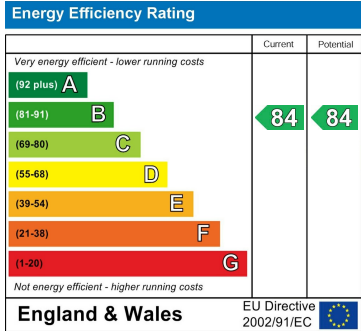
Area Map



Floor Plans



Energy Efficiency Graph



These particulars, whilst believed to be accurate are set out as a general outline only for guidance and do not constitute any part of an offer or contract. Intending purchasers should not rely on them as statements of representation of fact, but must satisfy themselves by inspection or otherwise as to their accuracy. No person in this firms employment has the authority to make or give any representation or warranty in respect of the property.